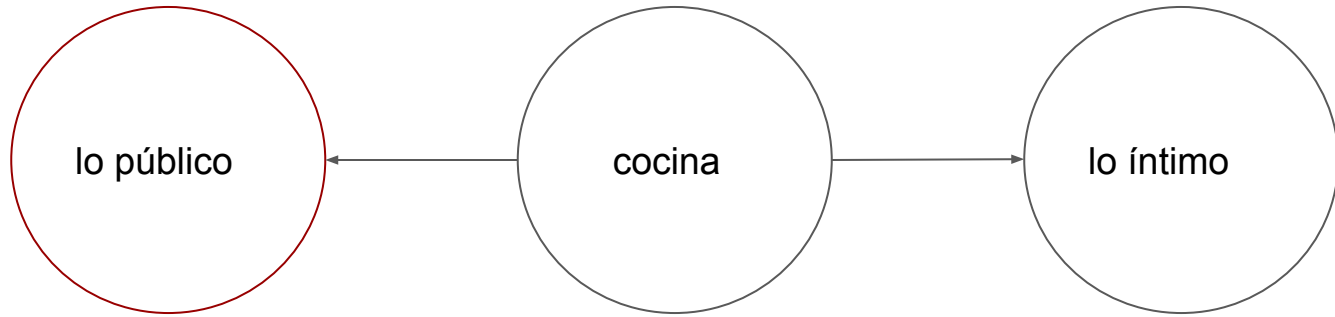


Clase 6

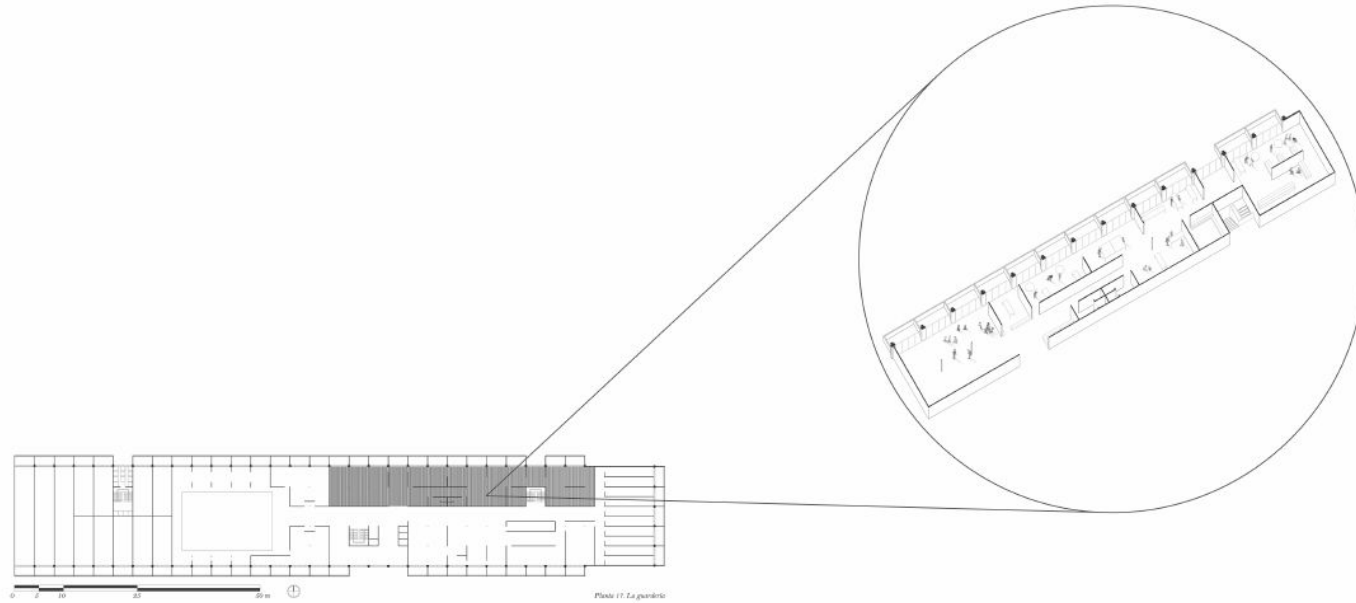
Taller del Acto y el Vacío
Tamaño Arquitectónico del Interior 2020



Referencia
Jardin Infantil
Internacional



Unité d'Habitation de Marseille. Le Corbusier, 1952.



Unité d'Habitation de Marseille. Le Corbusier, 1952.



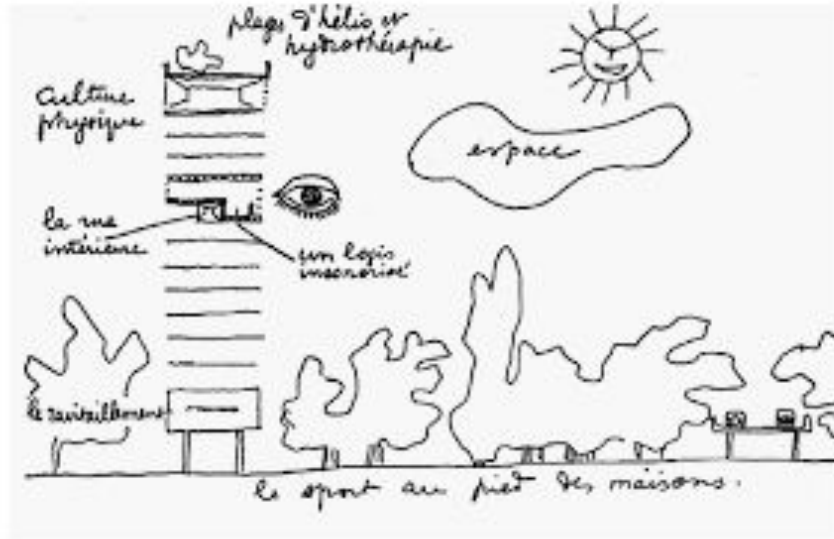




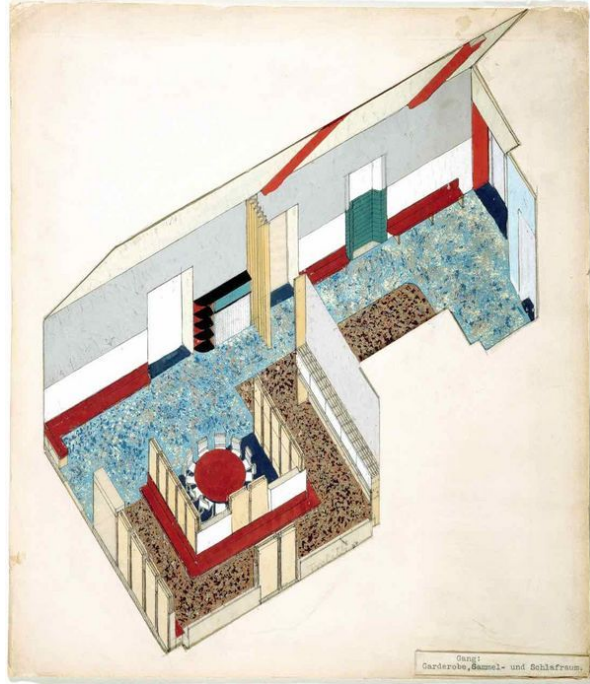
Unité d'Habitation de Marseille. Le Corbusier, 1952.



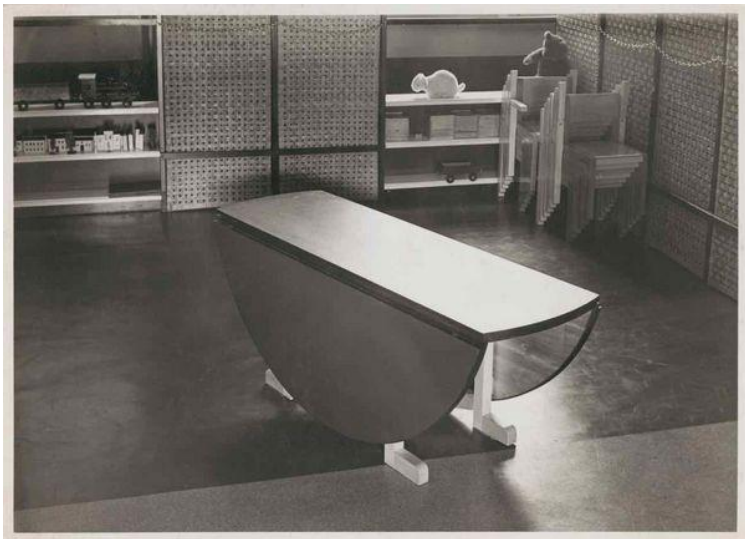
Unité d'Habitation de Marseille. Le Corbusier, 1952.



Unité d'Habitation de Marseille. Le Corbusier, 1952.



Kindergarten en Goethehof, Franz Singer - Friedl Dicker



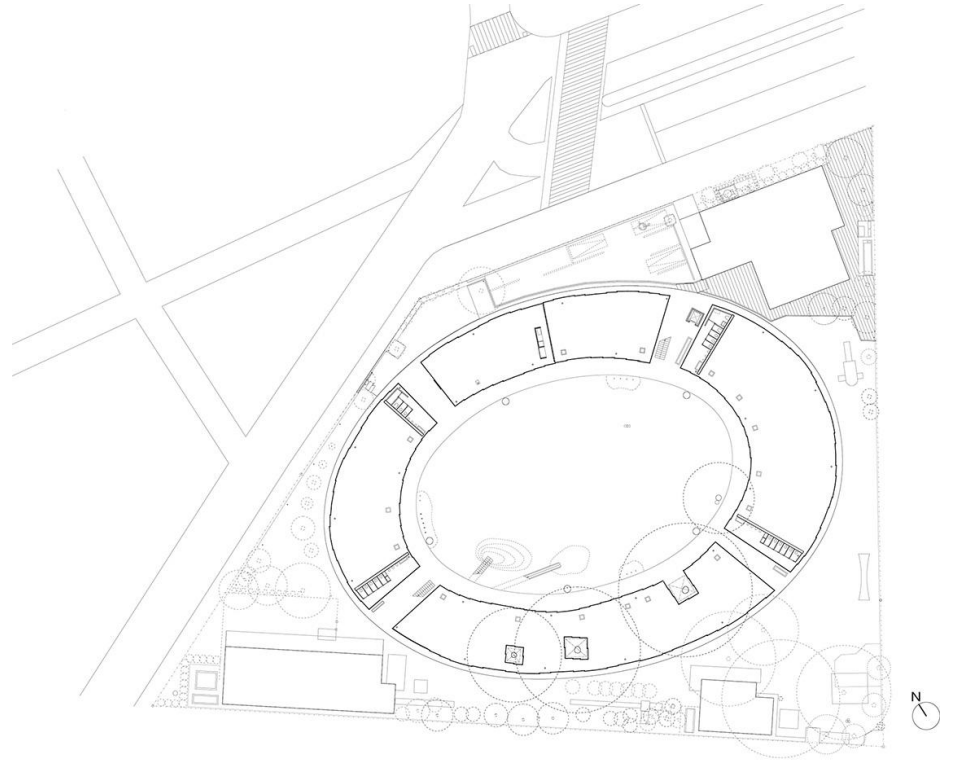
Kindergarten en Goethehof,
Franz Singer - Friedl Dicker





Fuji Kindergarten - Tezuka Architects

Montessori



Fuji Kindergarten - Tezuka Architects

Montessori



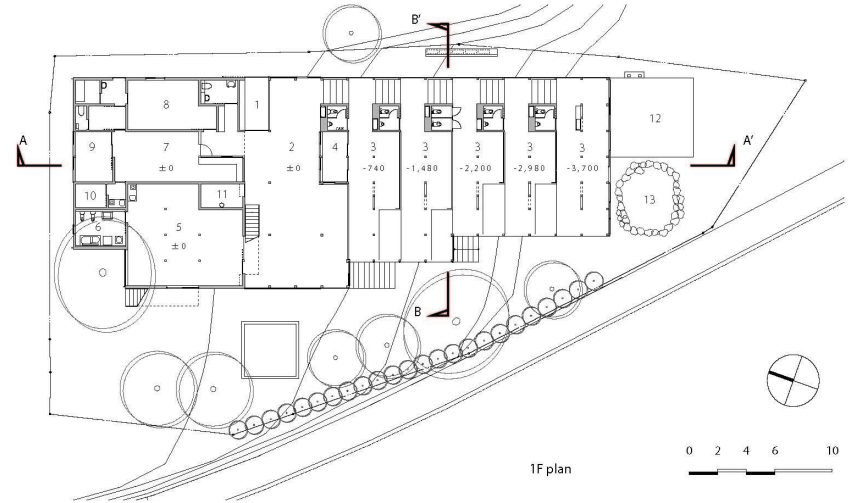
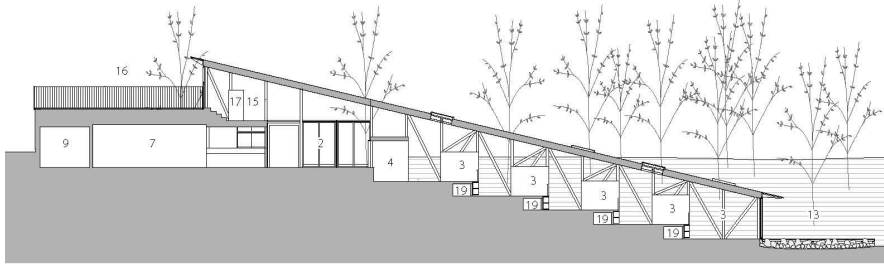
Fuji Kindergarten - Tezuka Architects



Montessori



Hakusui Nursery School - Yamazaki Kentaro Design Workshop



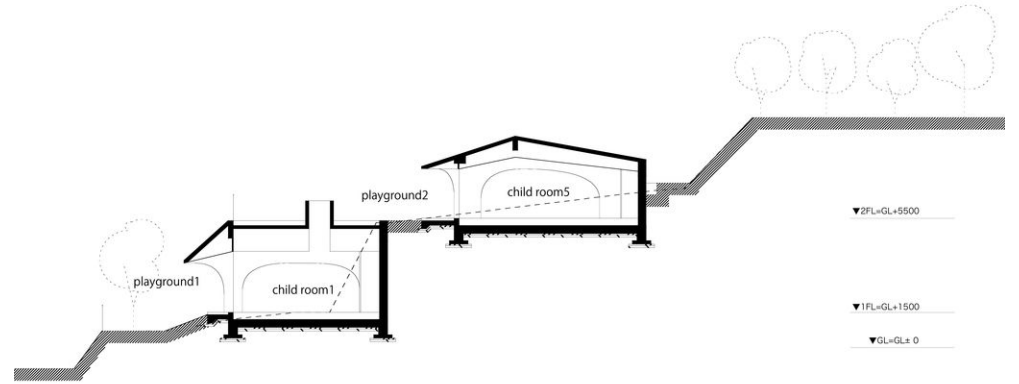
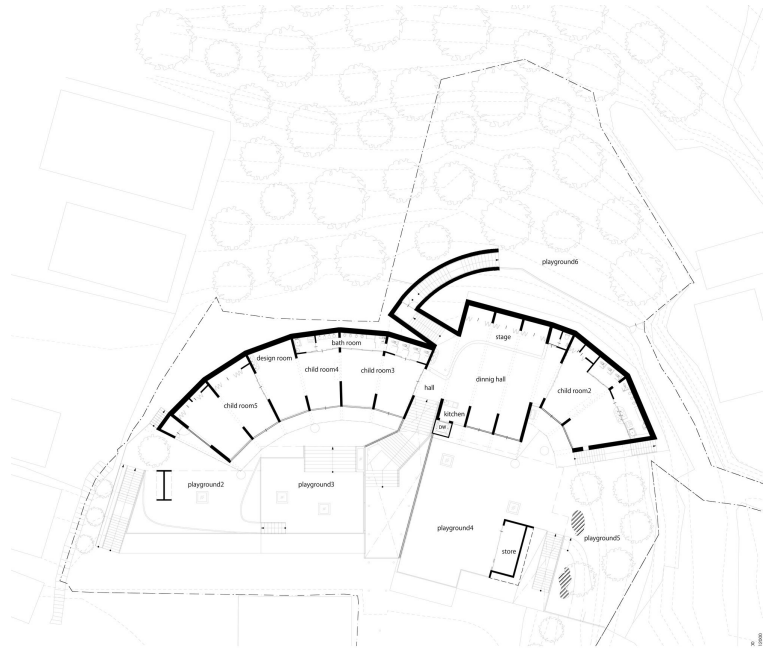
Hokusui Nursery School - Yamazaki Kentaro Design Workshop



Hakusui Nursery School - Yamazaki Kentaro Design Workshop



Guardería Atago - Kei Sasaki + Intermedia



Guardería Atago - Kei Sasaki + Intermedia



Guardería Atago - Kei Sasaki + Intermedia

Referencia

Jardin Infantil nacional

<https://www.junji.gob.cl/wp-content/uploads/2018/02/469-nuevos-jardines-infantiles-baja.pdf>

https://bibliotecadigital.mineduc.cl/bitstream/handle/20.500.12365/4638/criterios_dise%c3%b1o_espacios_educativos.pdf?sequence=1&isAllowed=y

<https://bibliotecadigital.mineduc.cl/handle/20.500.12365/574>