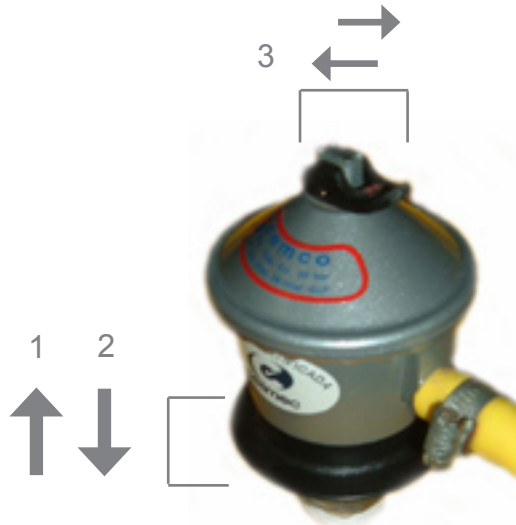


# Rediseño de un Widget

Sistema Elegido

Válvula de gas licuado



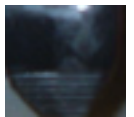
Instalación

- 1 presionar
- 2 bajar, soltar y presionar
- 3 dar o cortar gas

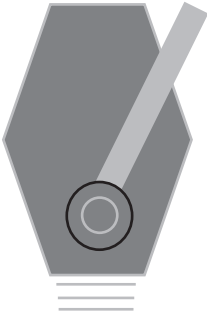
input



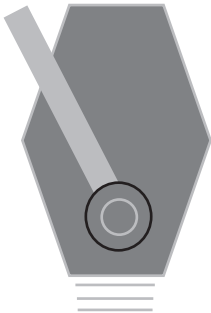
output



Propuesta



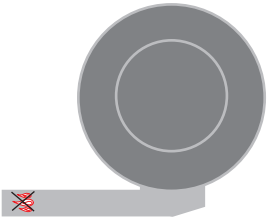
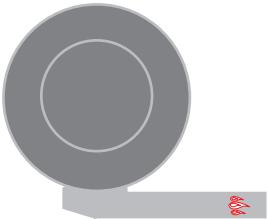
input

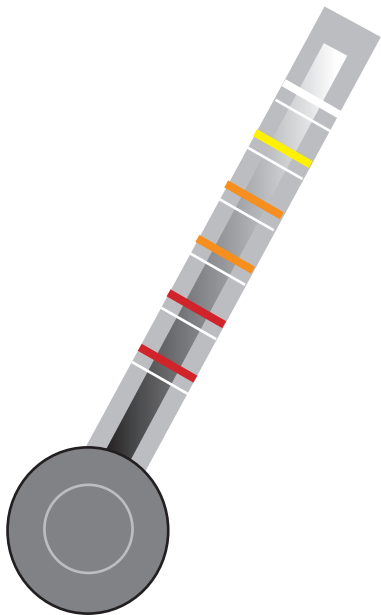


output

Instalación

- 1 colocar
- 2 mover palanca





índice de carga

input



output



información del estado  
de la válvula

1 elemento