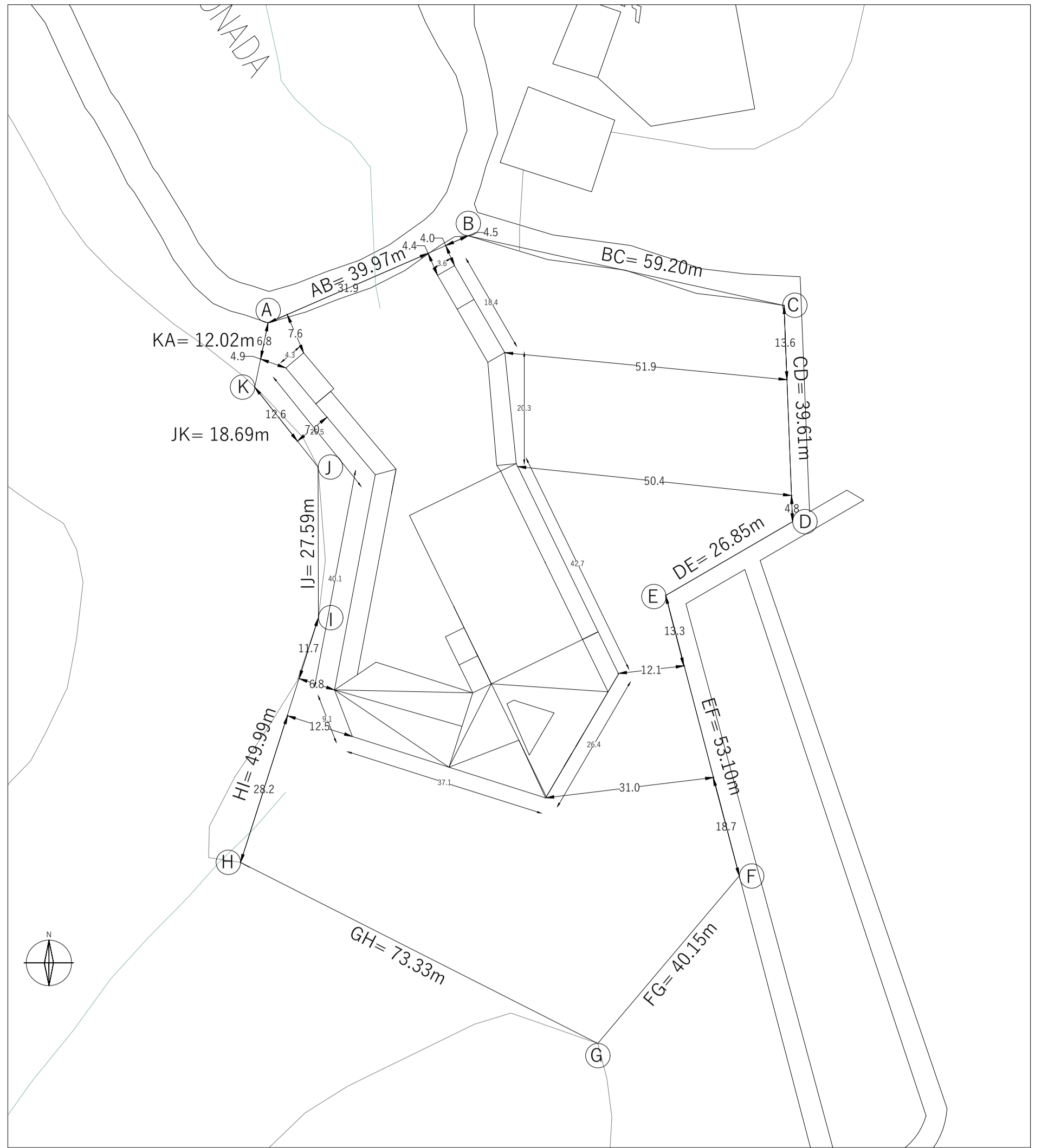


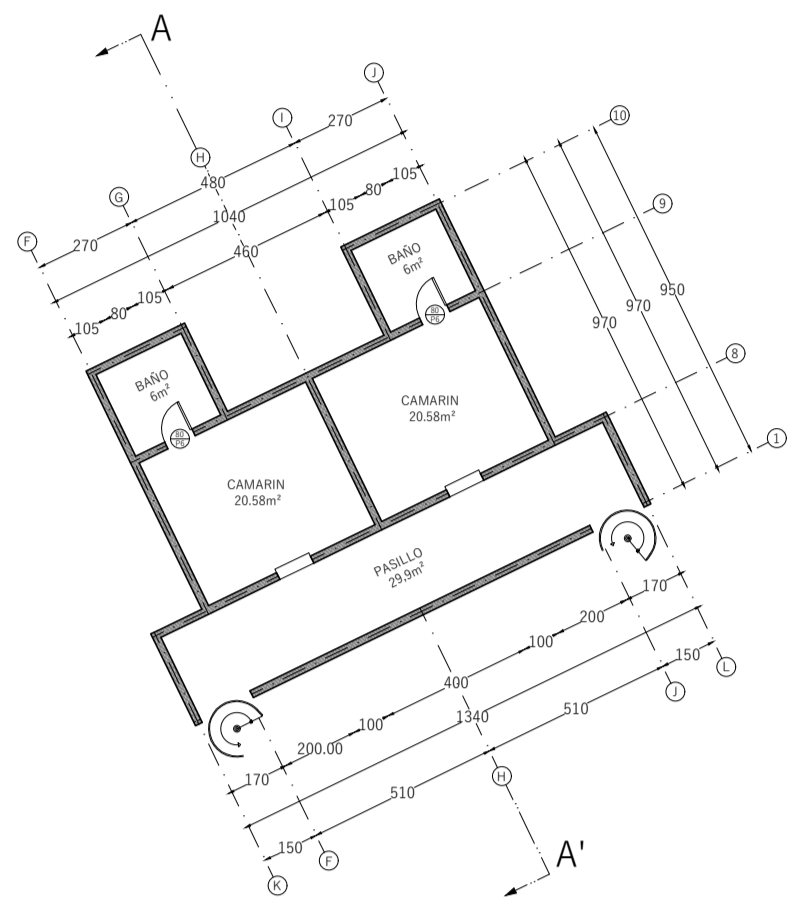
# PLANIMETRÍA



ESC 1:5000  
Plano Ubicación  
Avenida alemania, Cerro Merced, Valparaíso

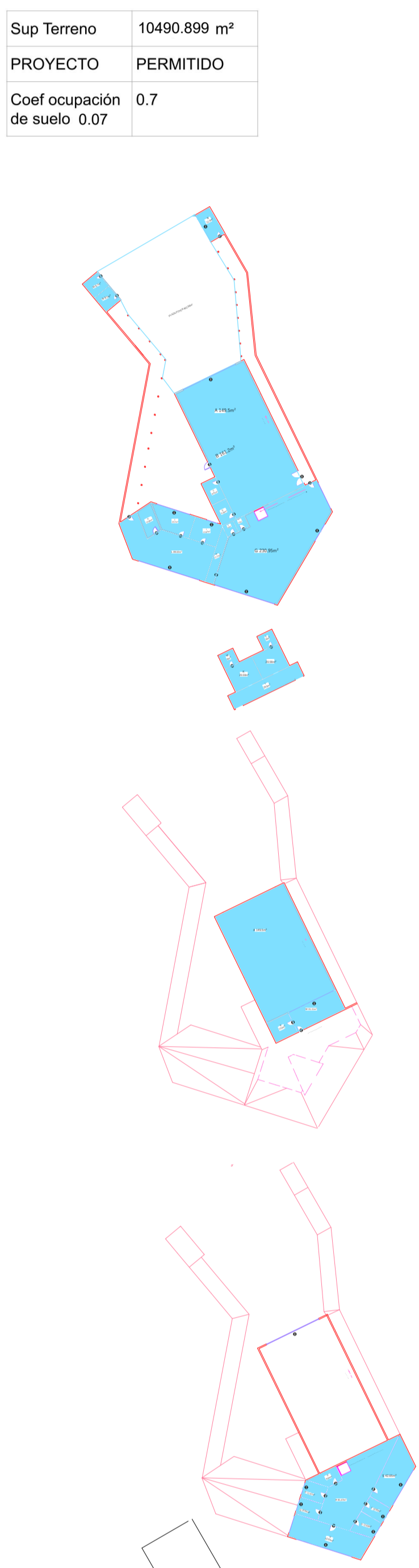


ESC 1:750  
Plano Emplazamiento  
Avenida alemania, Cerro Merced, Valparaíso

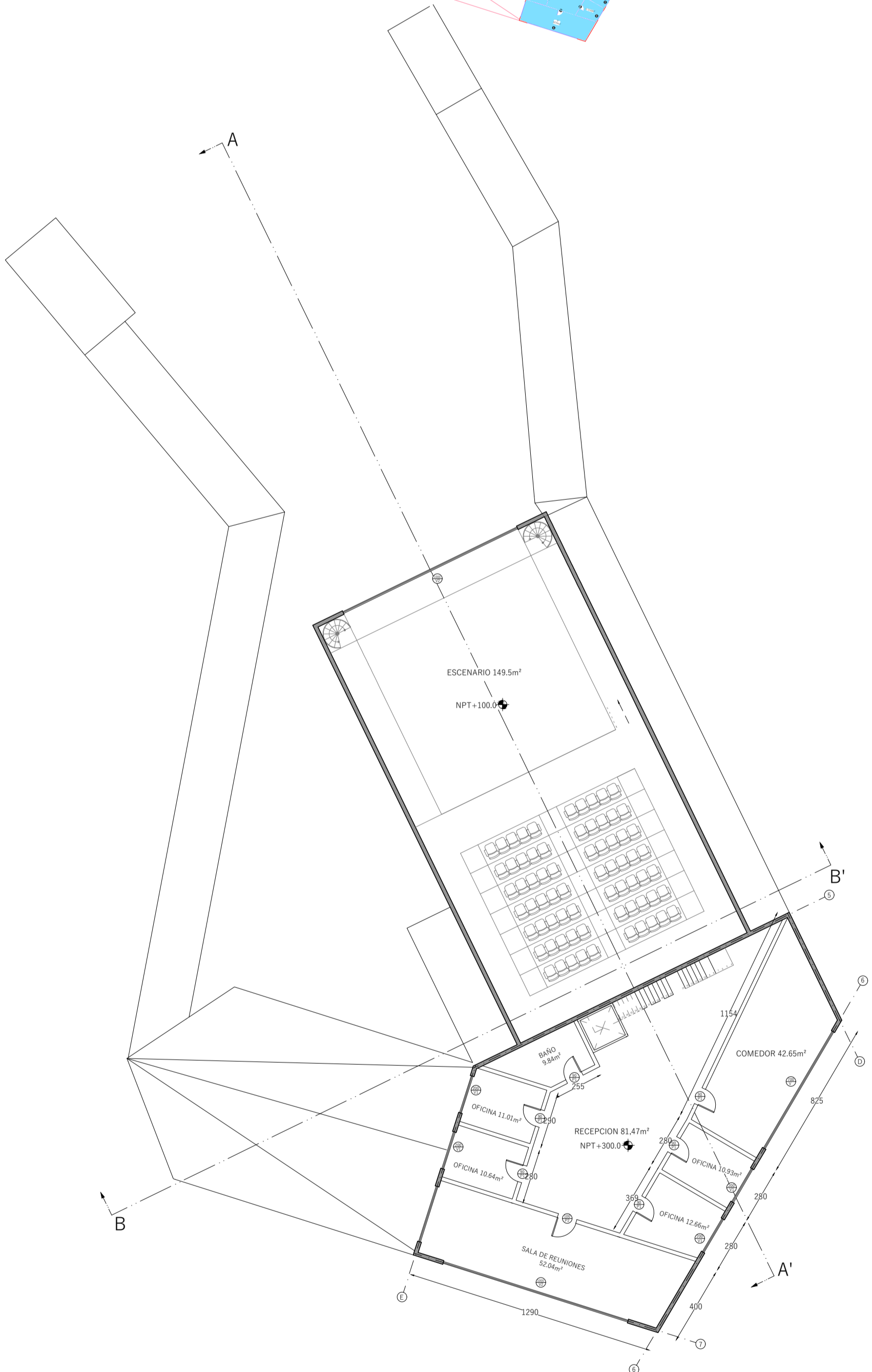
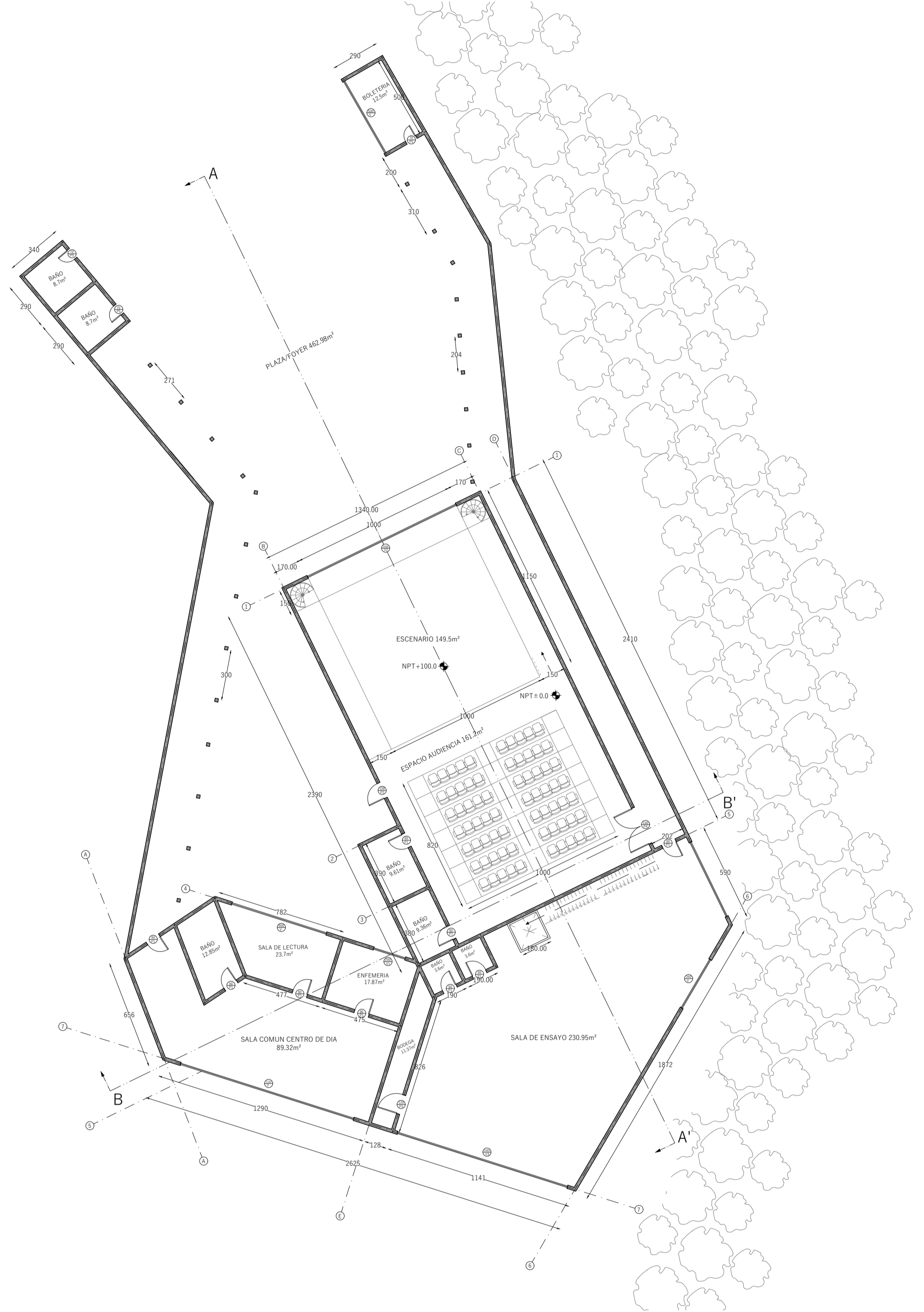


Planta Subterráneo

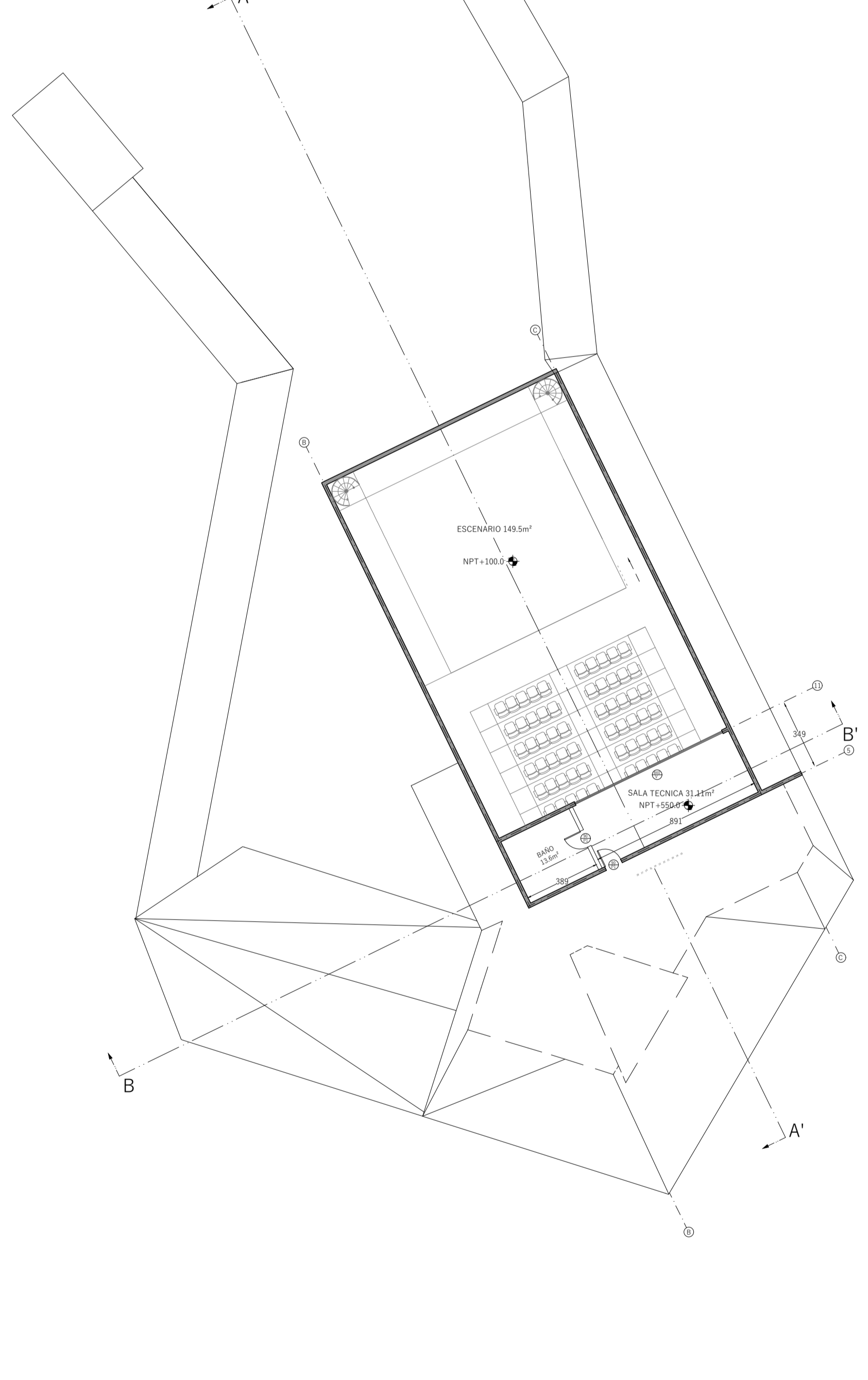
Piso	Sup Terreno	PROYECTO	PERMITIDO
Piso 1	10490.899 m <sup>2</sup>		
A	149,5 m <sup>2</sup>		
B	161,2 m <sup>2</sup>		
C	9,61 m <sup>2</sup>		
D	9,36 m <sup>2</sup>		
E	3,6 m <sup>2</sup>		
F	3,6 m <sup>2</sup>		
G	230,95 m <sup>2</sup>		
H	11,37 m <sup>2</sup>		
I	17,87 m <sup>2</sup>		
J	23,7 m <sup>2</sup>		
K	12,85 m <sup>2</sup>		
L	89,3 m <sup>2</sup>		
M	8,7 m <sup>2</sup>		
N	8,7 m <sup>2</sup>		
Ñ	12,5 m <sup>2</sup>		
<b>Total primer piso</b>	<b>743,1 m<sup>2</sup></b>		
Piso 2			
O	9,84 m <sup>2</sup>		
P	11,01 m <sup>2</sup>		
Q	10,64 m <sup>2</sup>		
R	81,47 m <sup>2</sup>		
S	42,65 m <sup>2</sup>		
T	10,93 m <sup>2</sup>		
U	12,66 m <sup>2</sup>		
V	52,04 m <sup>2</sup>		
<b>Total segundo piso</b>	<b>231,24 m<sup>2</sup></b>		
Piso 3			
W	31,11 m <sup>2</sup>		
X	13,6 m <sup>2</sup>		
<b>Total tercer piso</b>	<b>44,71 m<sup>2</sup></b>		
Subterráneo			
Y	29,9 m <sup>2</sup>		
Z	20,58 m <sup>2</sup>		
A1	6 m <sup>2</sup>		
C1	6 m <sup>2</sup>		
<b>Total Subterráneo</b>	<b>83,06 m<sup>2</sup></b>		
<b>Total</b>	<b>1099,32 m<sup>2</sup></b>		



Planta Primer piso

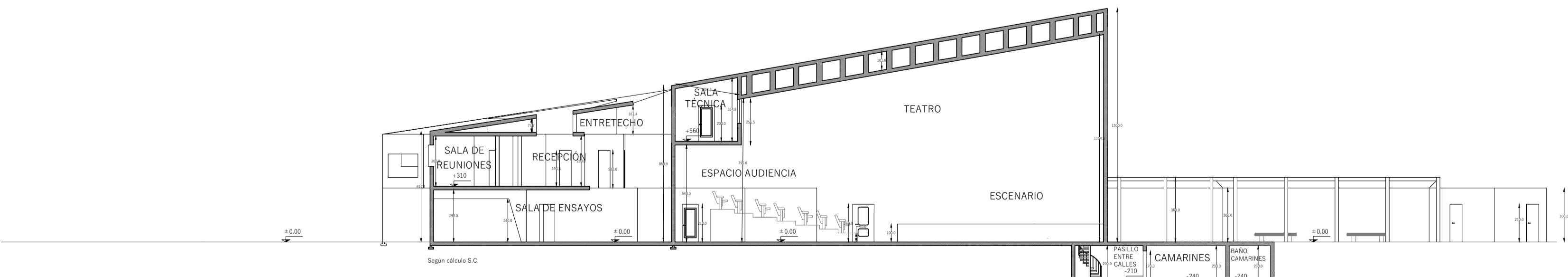


Planta Segundo piso

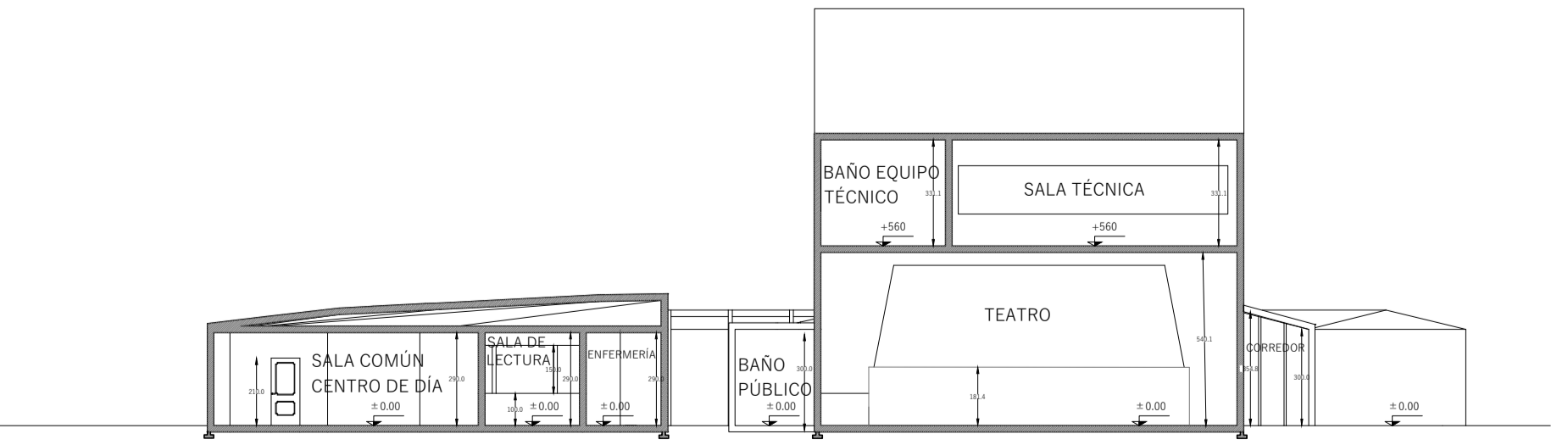


Planta Tercer piso

ESC 1:200  
Plano Planta  
Avenida alemania, Cerro Merced, Valparaíso



ESC 1:200  
Plano Corte A-A'  
Avenida alemania, Cerro Merced, Valparaíso



ESC 1:200  
Plano Corte B-B'  
Avenida alemania, Cerro Merced, Valparaíso

