

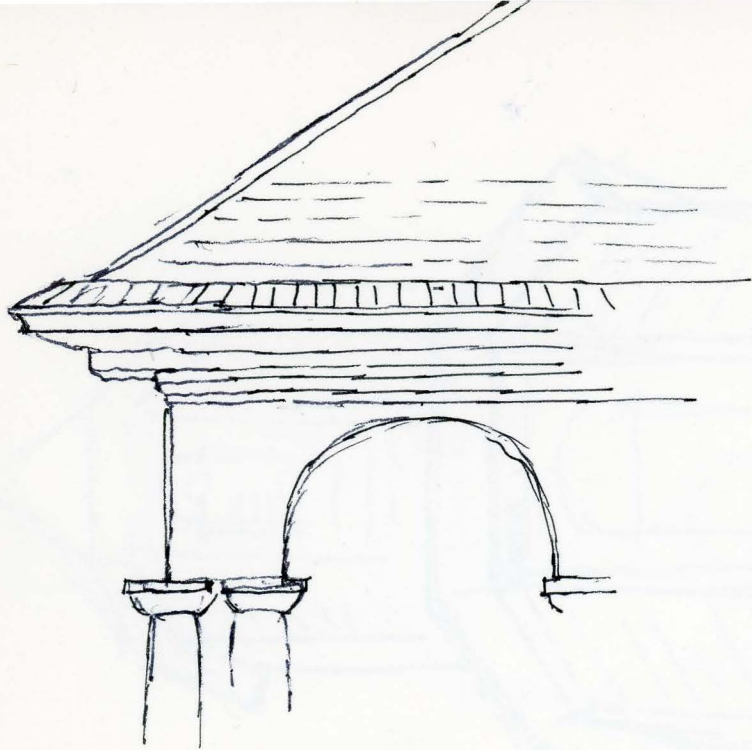
SUR
DE CHILE



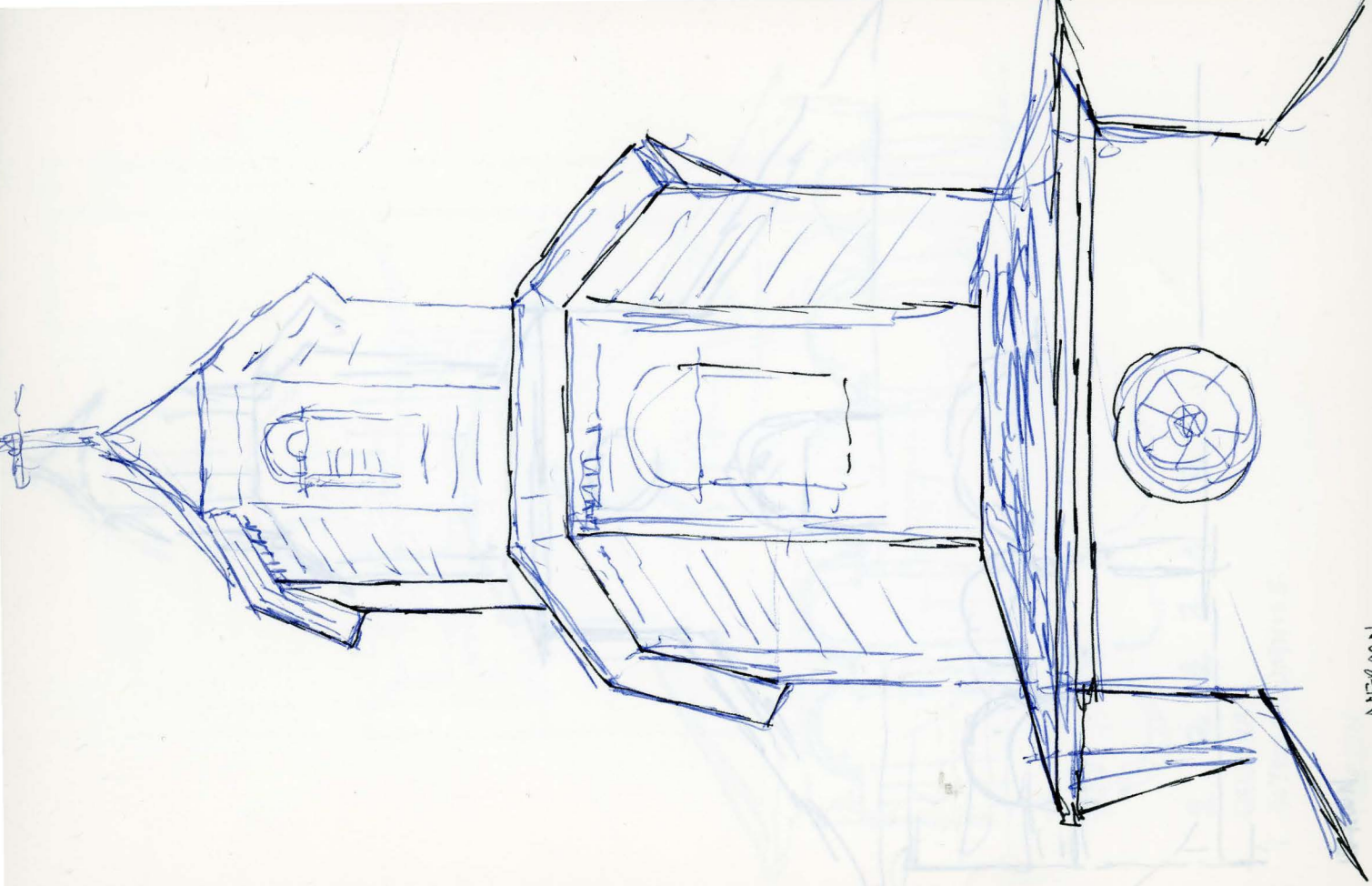
COLONIA BAUNAU. AUSTRIACOS BRANNAU



COLONOS AUSTRIACOS CAMINO A RIO FRIO BRANNAU



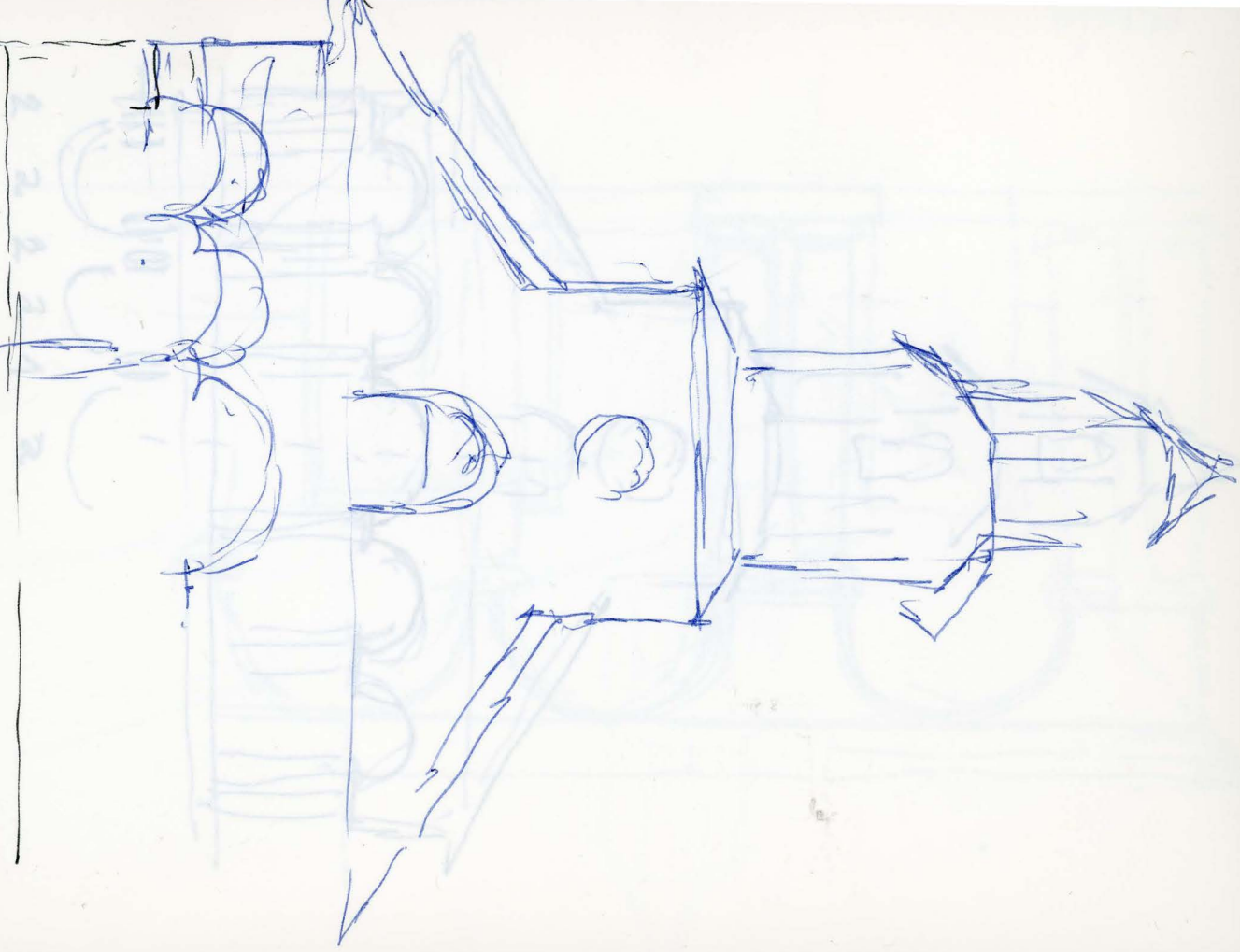
ATERCÓN

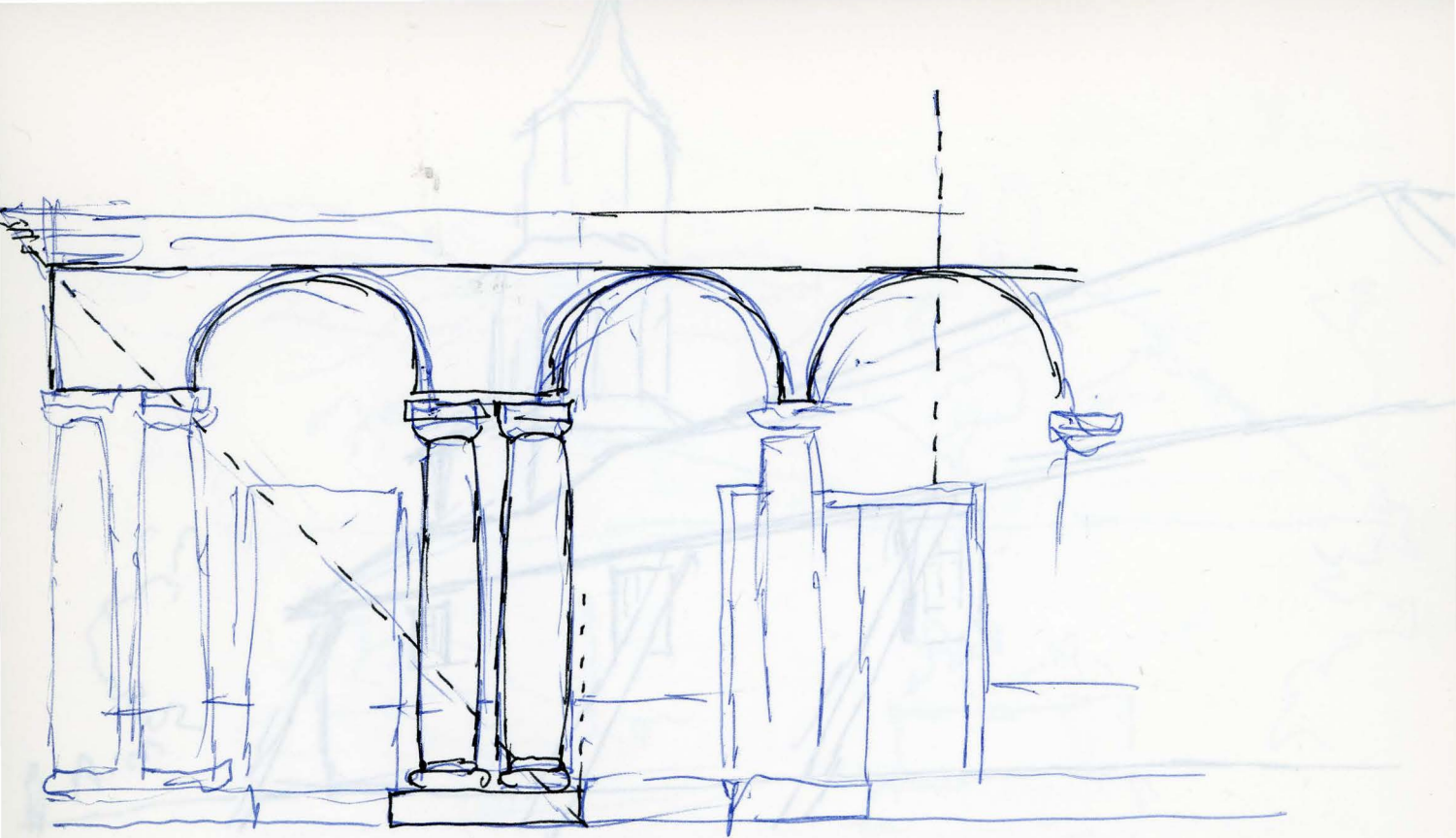


NEKON

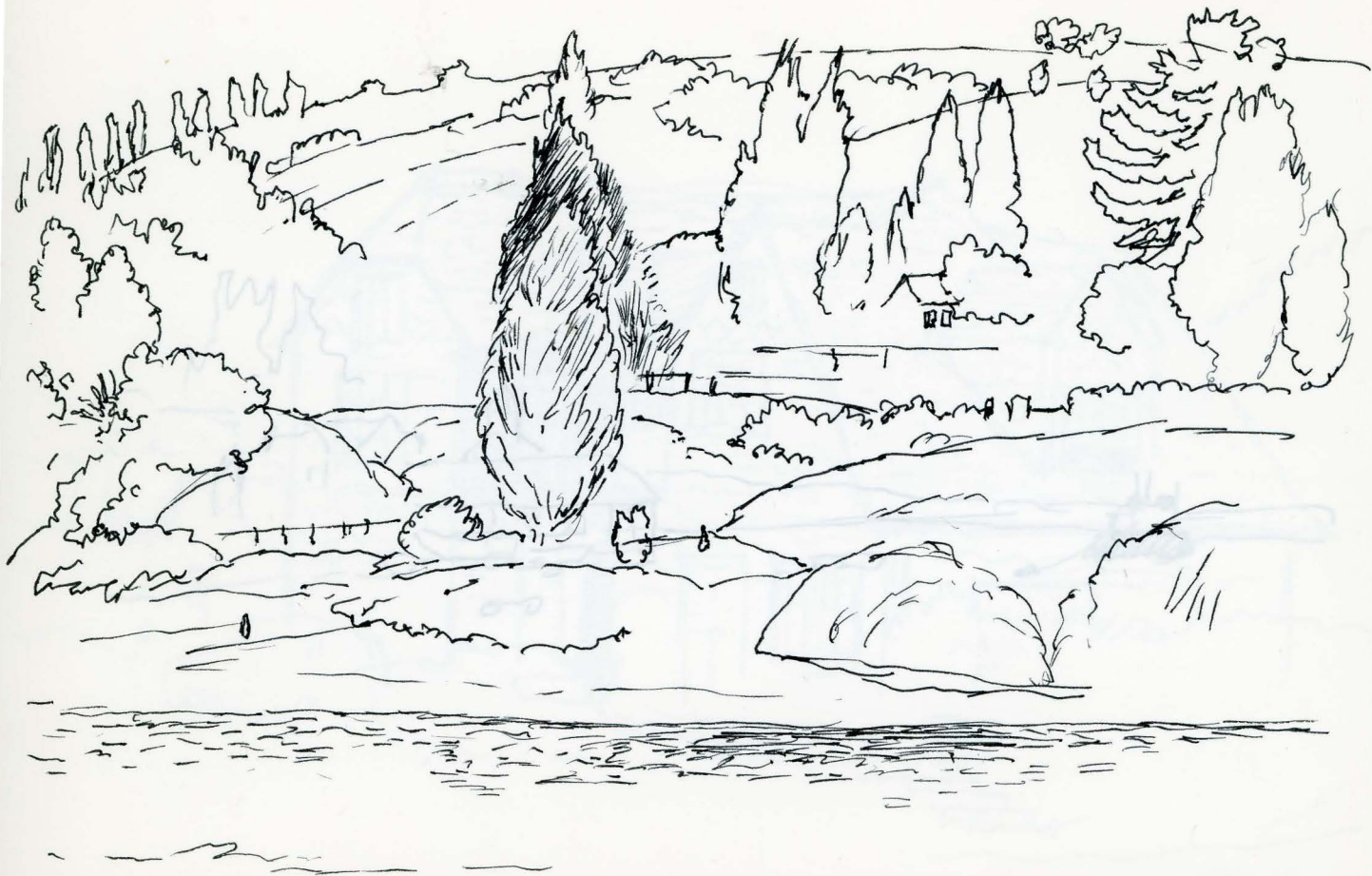
NEKRON

COLUMNS
INTERCOLUMNS





NEARCON

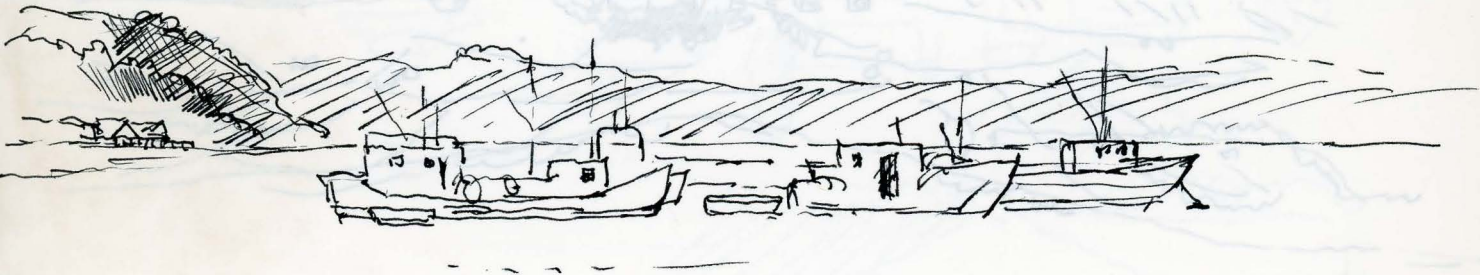




50



1980



DALCAHUE DESDE BARQUIN.

EL VIENTO SUPIERA DESDE LA PAREDA

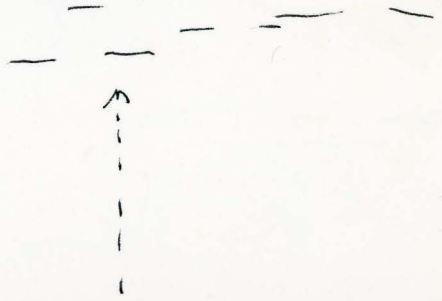
EL VIENTO SOPLABA DESDE LA DERECHA



QUIQUEL



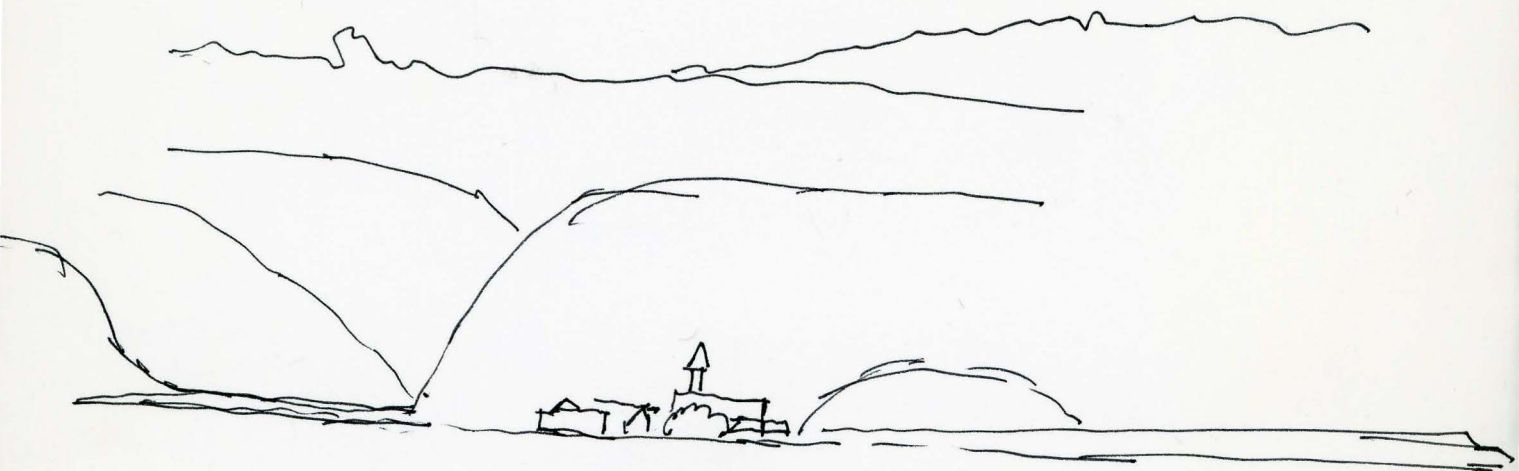
DESDE EL BARCO RUMBO A MENCHUQUE
UN PUEBLITO, EN MEDIO DE LAS PINCHAS



LA IGLESIA

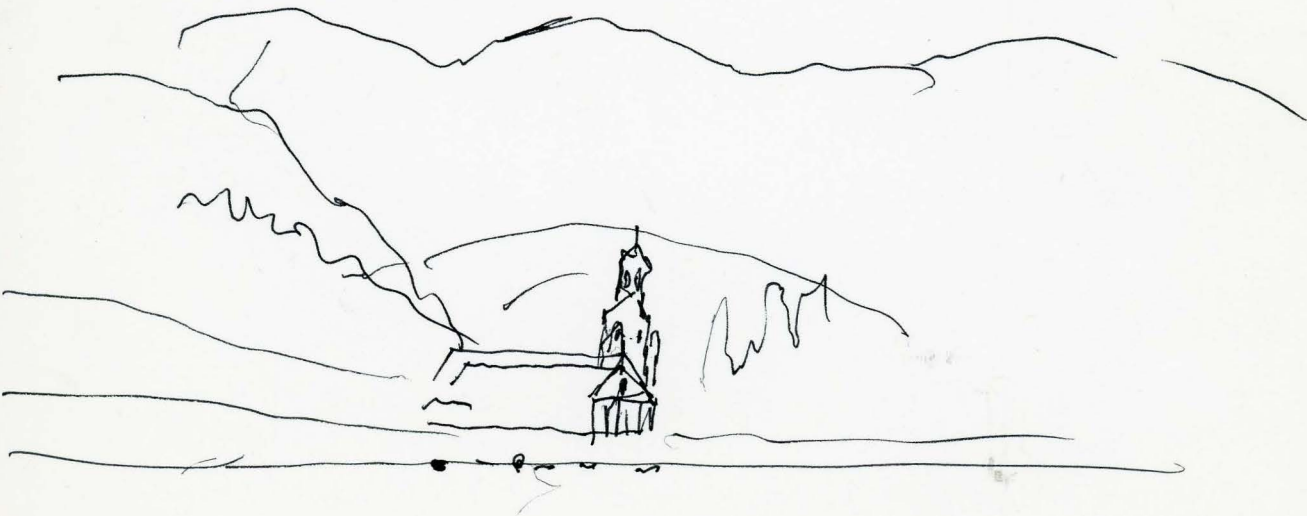


DESDE EL BANCO



OTRO PUEBLITO

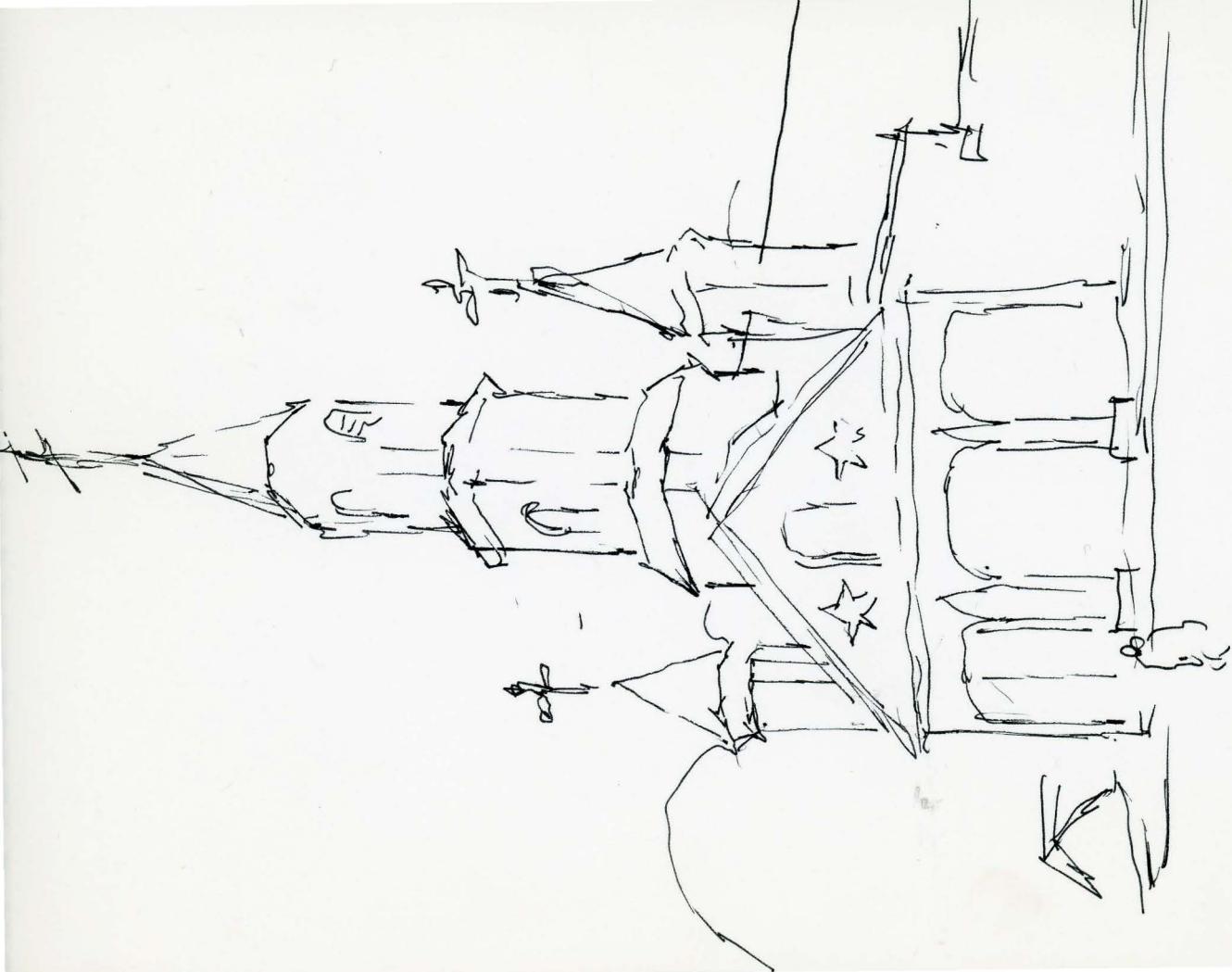




TENAVUM



SEDE SOCIAL

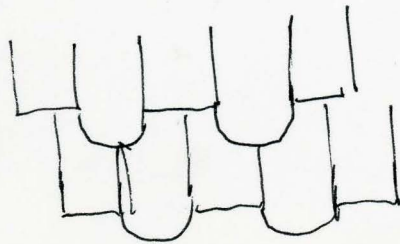
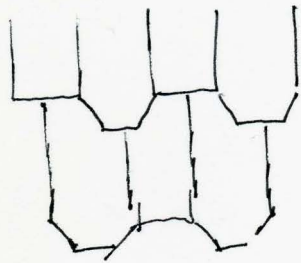


TE NAHUW

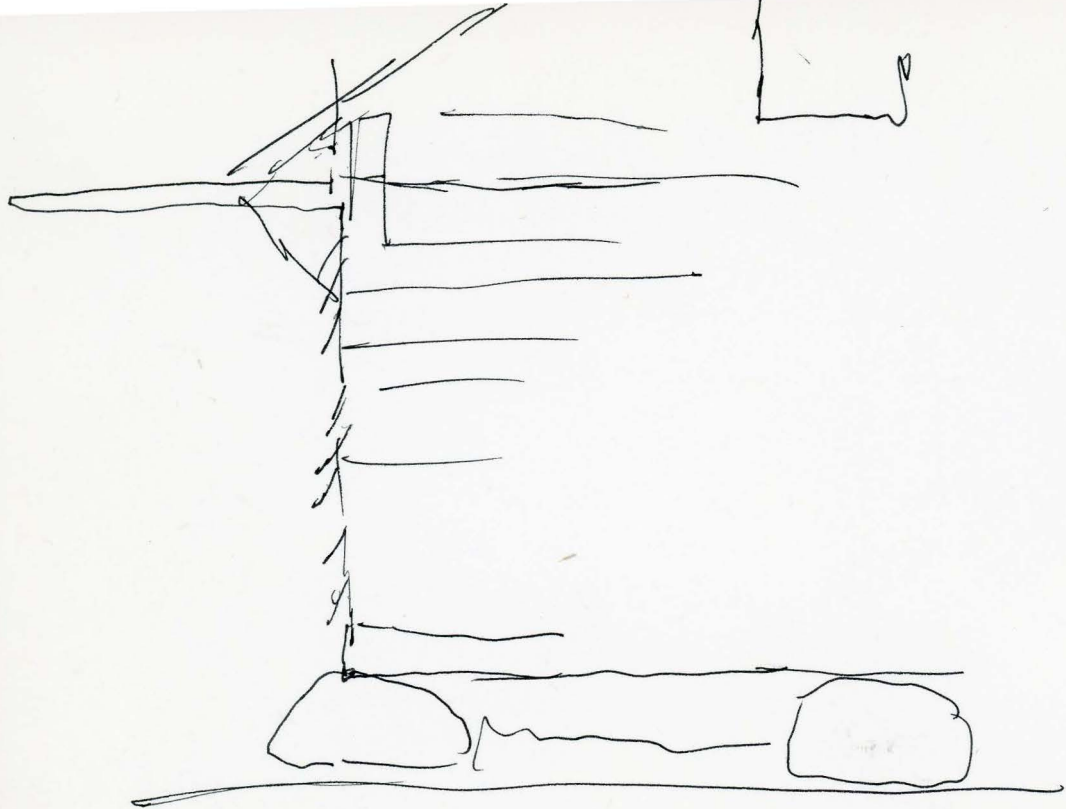


TODOS OS RECLINATORIOS MISIMOS

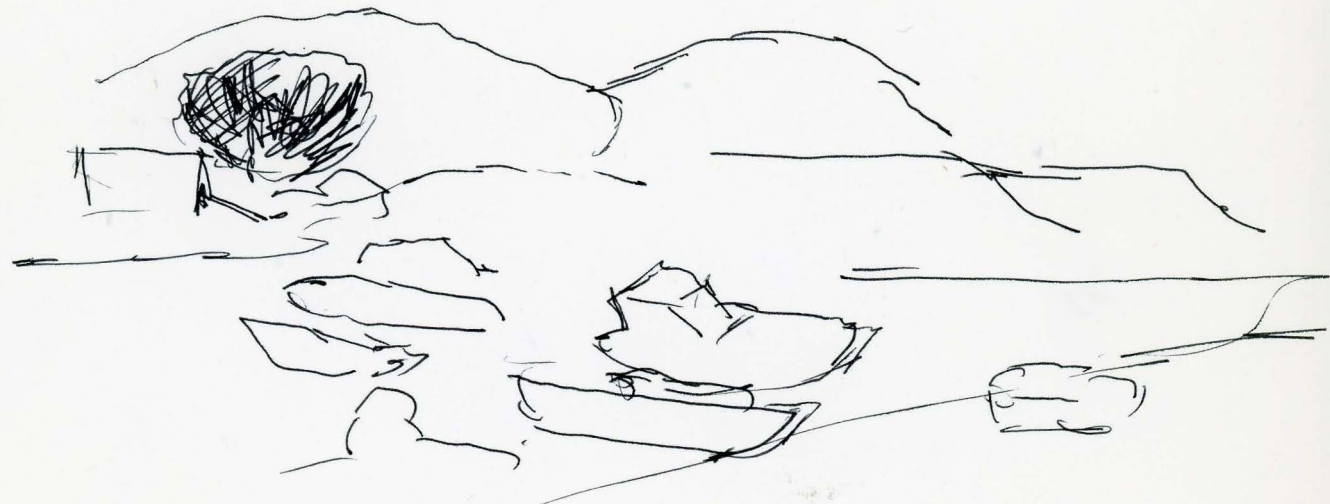




CRISTO CON BISAGNALS



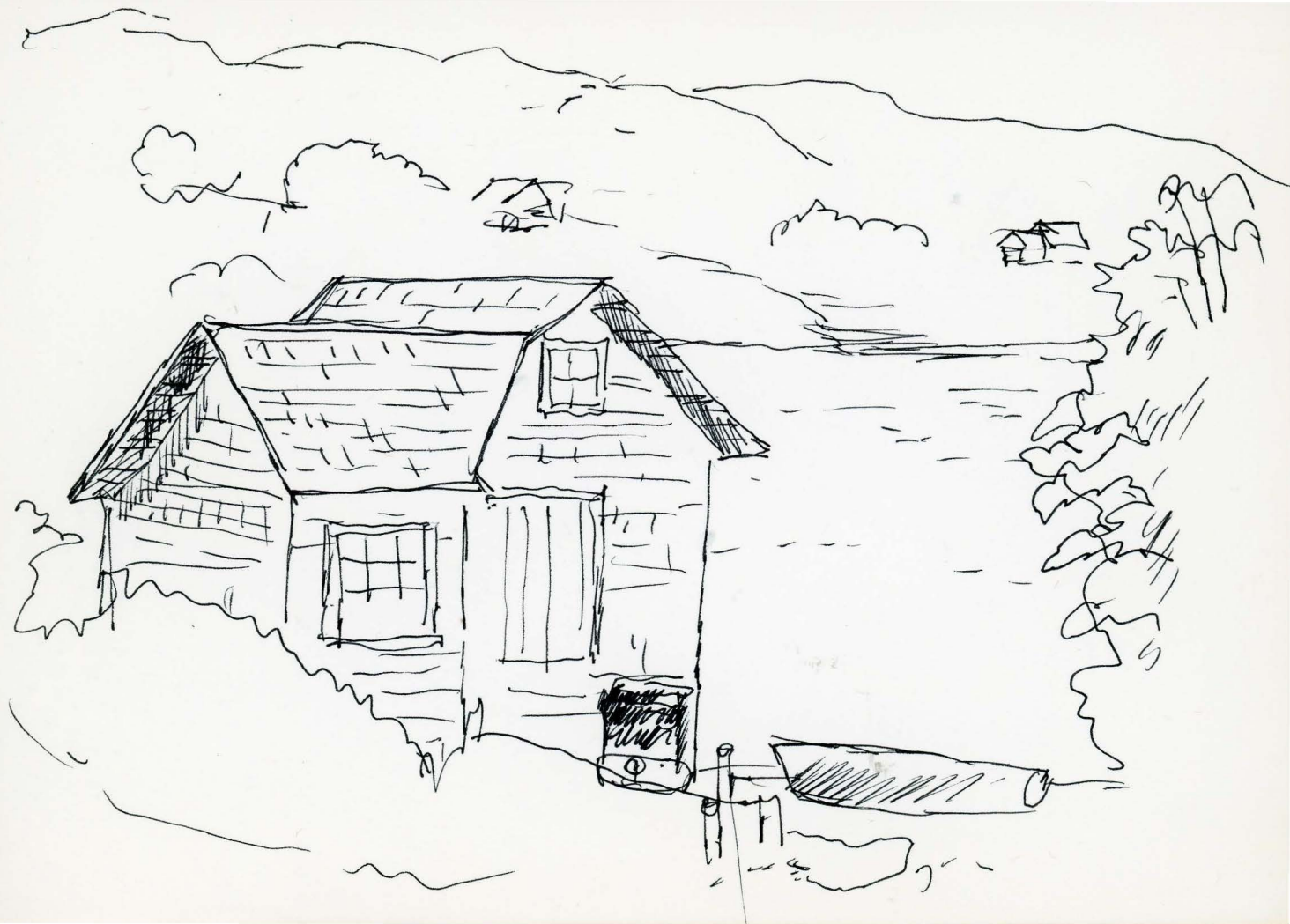
FUNDACI3N EN PIEDRA TEMPLADA



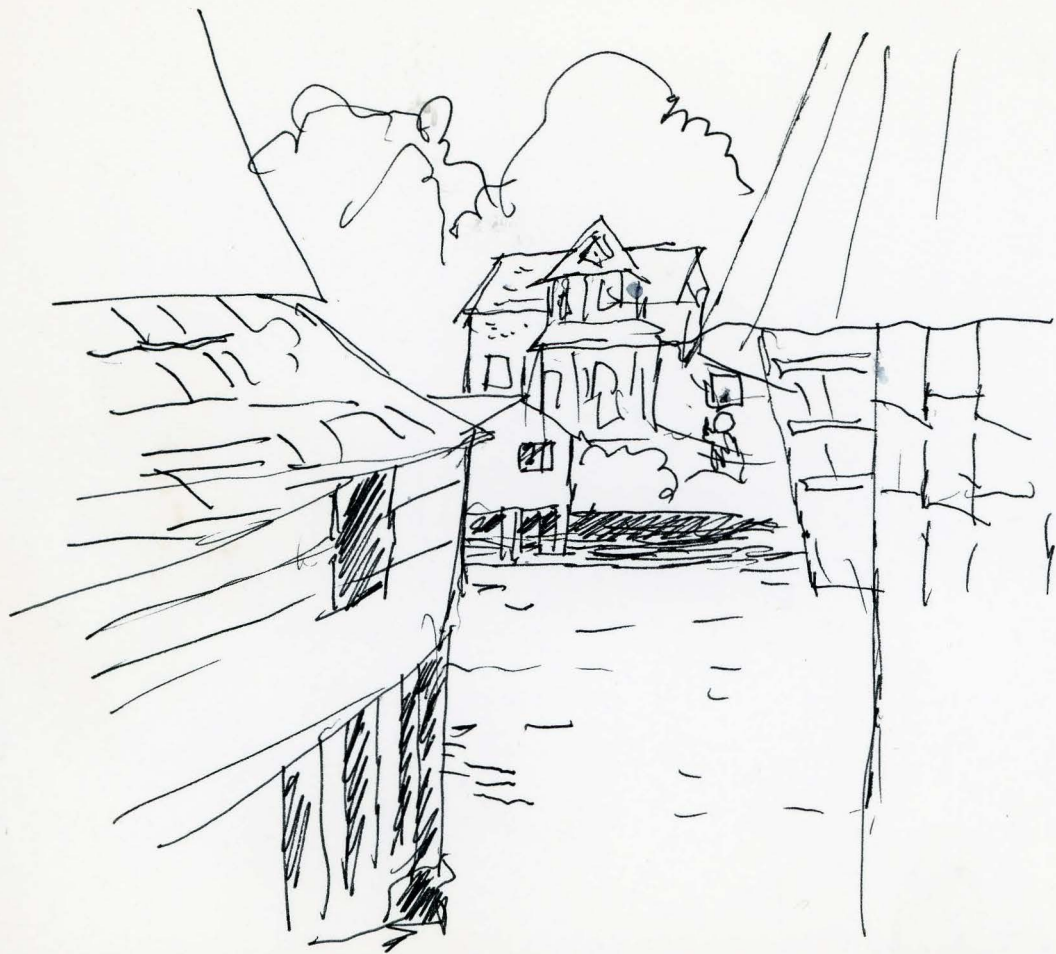
BOIES EN TENAUN



MENCHUQUE

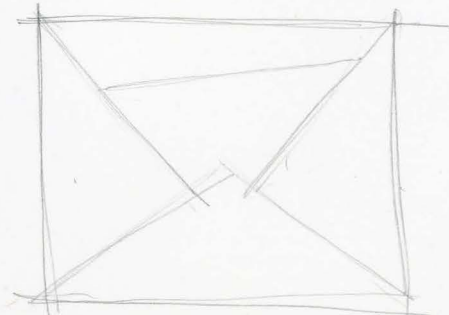
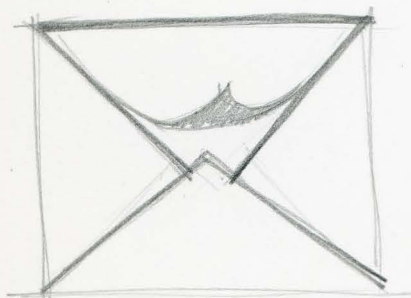
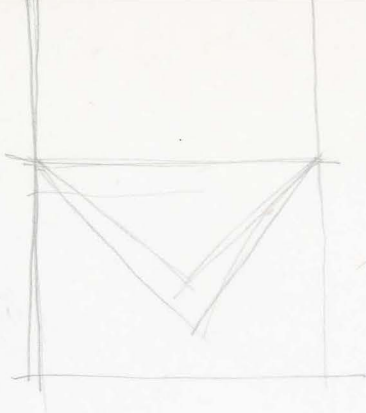
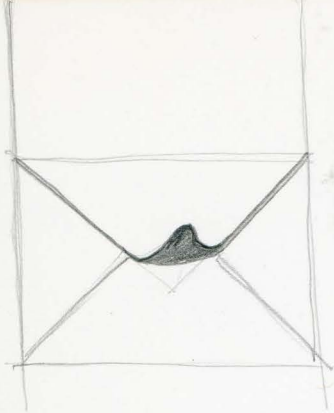


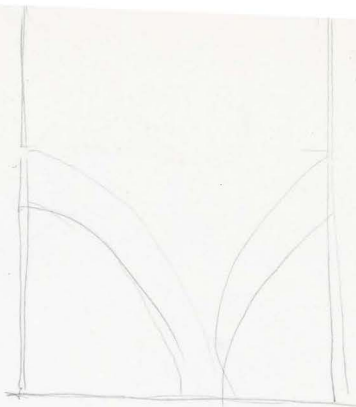
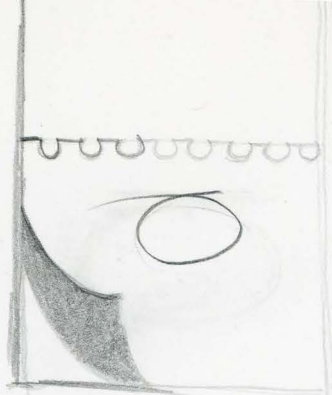
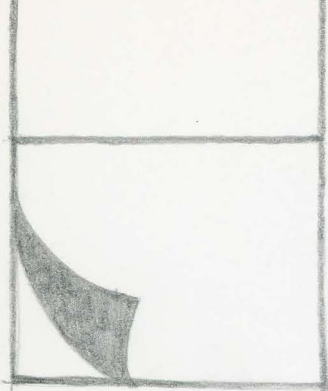












14-0-41
0-0-121

Para Alberto Cruz C.

de quien aspira a ser
una rama más del tan
fecundo tronco



